

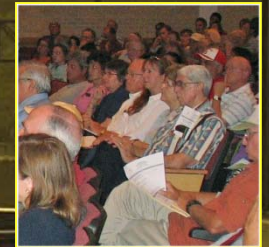


ALAMO RMA
Alamo Regional Mobility Authority



The Roads Ahead

Terry M. Brechtel, Executive Director





ALAMO RMA
Alamo Regional Mobility Authority

US 281 EIS

**SEGMENT 2
NW Military –
Redland**

**SEGMENT 3
Redland –
Kitty Hawk**

**SEGMENT 1
US 90 –
NW Military**

**US 281/Loop 1604
Interchange**

University
of Texas at
San Antonio

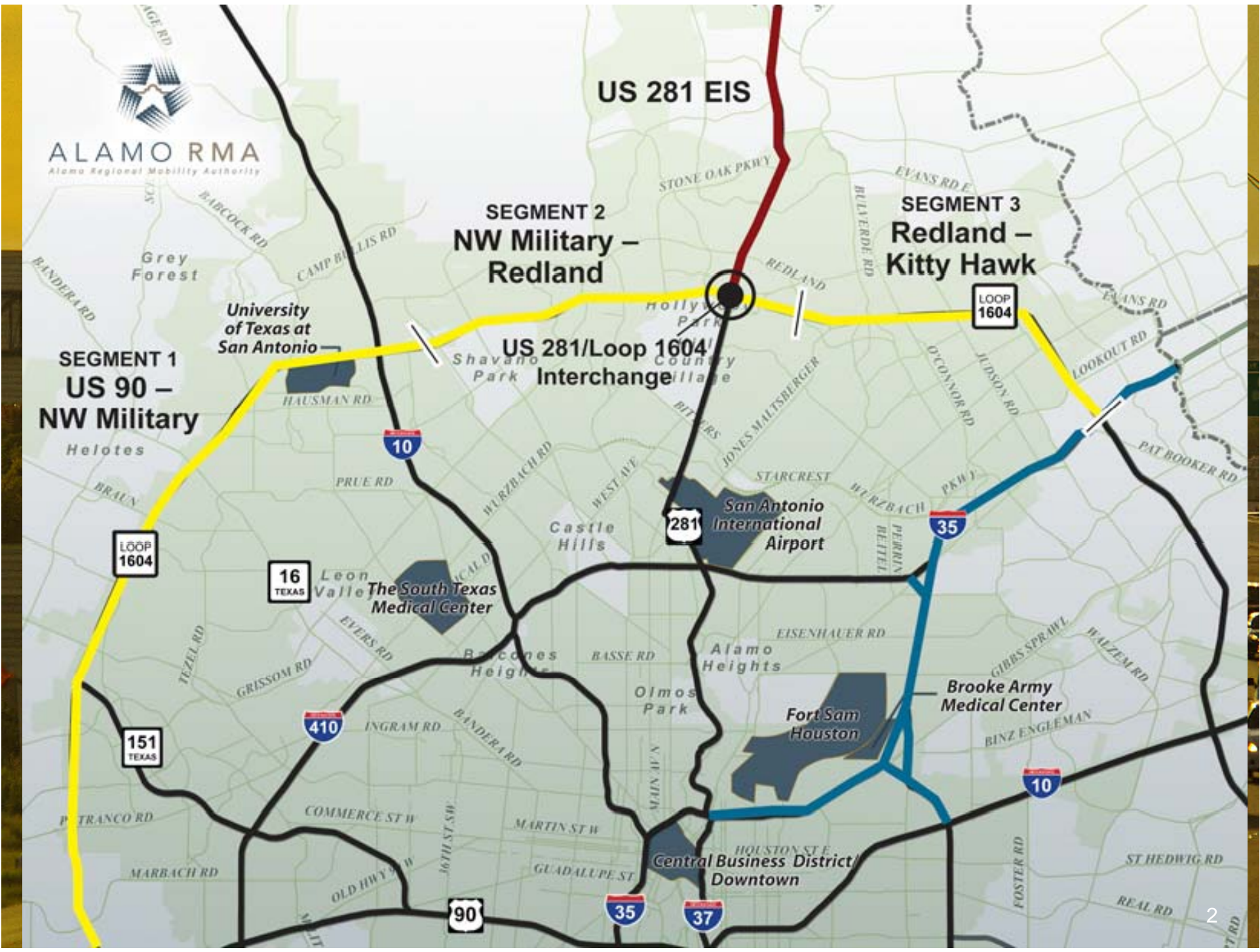
San Antonio
International
Airport

The South Texas
Medical Center

Brooke Army
Medical Center

Fort Sam
Houston

Central Business District/
Downtown



What is the Alamo RMA currently doing?

■ Environmental Projects

- US 281 Environmental Impact Statement
- Loop 1604 Environmental Impact Statement
- Loop 1604 Super Street Environmental Clearance
- Loop 1604 @ SH 151 Underpass Environmental Clearance

■ Construction Projects

- US 281 Super Street
- US 281 / Loop 1604 Interchange



US 281 Environmental Impact Statement

Want more information? Visit the official US 281 EIS Pages online at www.411on281.com/US281EIS



Get the 4-1-1 on 281



Loop 1604 Environmental Impact Statement

Want more information? Visit the official Loop 1604 EIS Pages online at www.MoreFor1604.com



Why undertake environmental studies?

- Answer the environmental questions once and for all – what impact could improvements have on the environment
- Examine both non-toll and toll project alternatives through the Draft Environmental Impact Statement
- Two estimated cost for the 2 Environmental Impact Statements is approximately \$17 Million



Anticipated Activity Timeline

US 281

14 months into the EIS process

Ranked as the 38th most congested corridor in Texas

- **Record of Decision** **Spring, 2012**
- **Construction commences** **April 2013**
- **Construction completion** **November 2016**



Get the 4-1-1 on 281

Anticipated Activity Timeline



Loop 1604

14 months into the EIS process

Includes the 23rd most congested corridor in Texas

- **Record of Decision** Summer, 2012
- **Construction commences**
 - US 90 to NW Military October 2013
 - NW Military to Redland November 2014
 - Redland to Kittyhawk August 2018
- **Construction completion**
 - US 90 to NW Military October 2016
 - NW Military to Redland April 2018
 - Redland to Kittyhawk August 2020



Federal Stimulus Projects

- Alamo RMA Federal Stimulus Projects
 - US 281 Super Street
 - Loop 1604 / US 281 Interchange

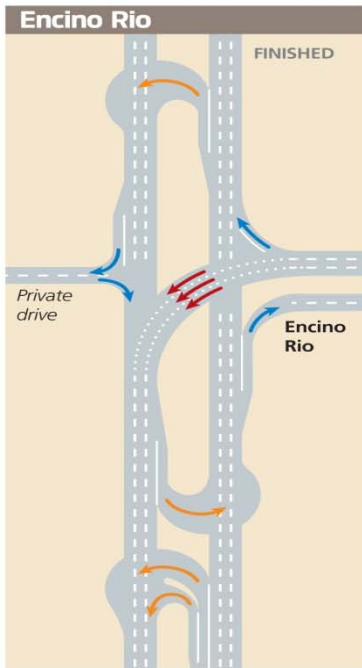


Photo from San Antonio Express-News – John Davenport



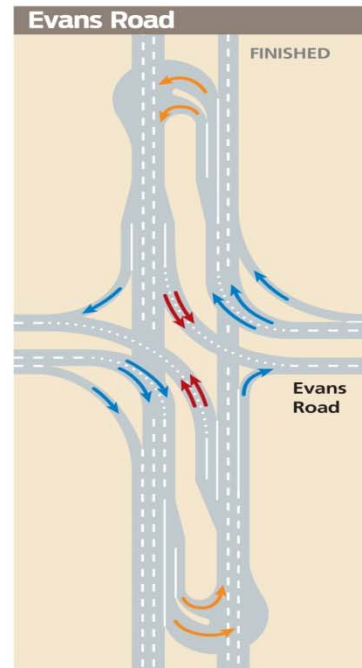


U.S. 281 'superstreet' almost done

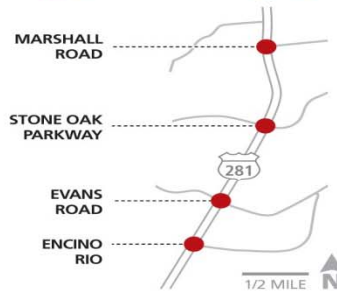
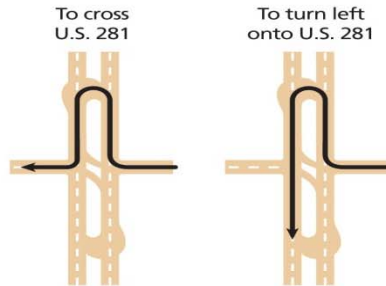


Evans Road became the third intersection on U.S. 281 North to be reconfigured into a "superstreet" last weekend. Work crews will prepare the final intersection to become a superstreet this week. The Stone Oak Parkway intersection will be closed beginning Friday night. Superstreets are intended to reduce the length of stops at traffic signals and ease congestion by eliminating cross-highway traffic. The \$6.8 million superstreet corridor is a temporary solution to improve traffic flow on U.S. 281 North, according to the Alamo Regional Mobility Authority.

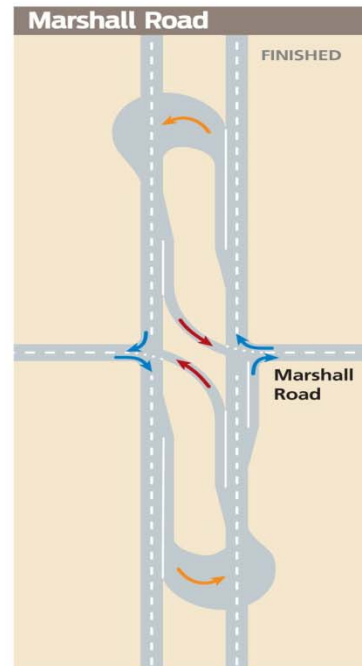
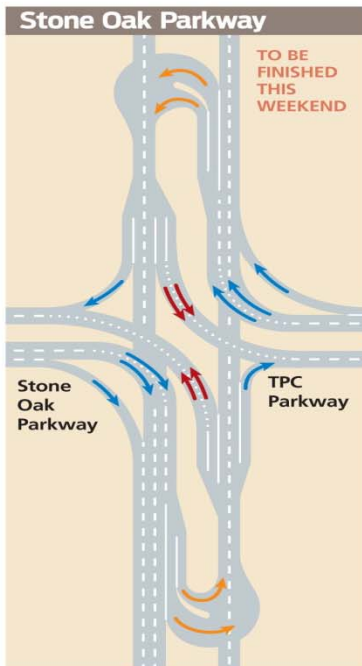
— George Zarazua/Staff writer



USING THE U-TURNS

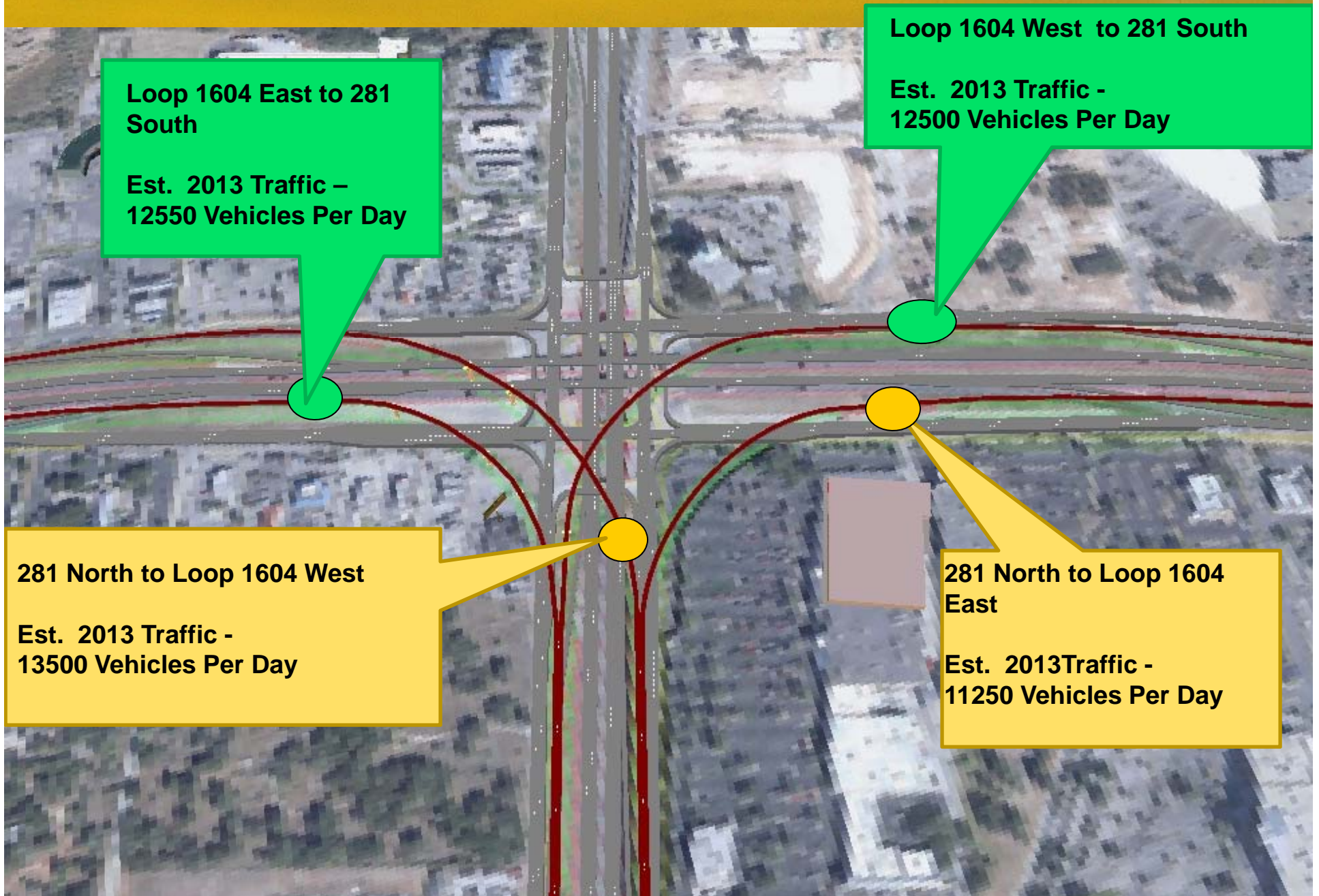


Note: Diagrams not to scale
 SOURCE: Alamo Regional Mobility Authority
 MARK BLACKWELL
 mblackwell@express-news.net



© Graphic By Mark Blackwell
 San Antonio Express/ZUMA Press

Proposed US 281 / Loop 1604 Interchange Project



US 281 / Loop 1604 Interchange

- Four non-toll direct connectors directly linking US 281 and Loop 1604 together – providing for operational and safety improvements to the existing roadways
- At the April 15, 2010 Board Meeting – Williams Brother was awarded the design build contract for the US 281 / Loop 1604 Interchange project
- On August 25, 2010 – a lawsuit was filed by Aquifer Guardians in Urban Areas challenging the environmental clearance and funding for this project



Team Make-up

Williams Brothers Construction Co. (WB)

Equity Members:

- Williams Brothers Construction Co. (Houston)
- Jacobs Engineering Group Inc. (San Antonio)

Non-equity Members of Team:

- Rone Engineering (Austin)
- Structural Engineering Assoc. (SEA) (Local)
- Alliance Geotechnical Group (Dallas)
- Hicks & Company (Austin)
- JoAnn Ramon (Local)
- Trevcon (Katy)
- Softdig (Local)
- Terracon (Local)
- Bain Medina Bain (Local)
- Gonzalez, Kypuros, & White (Local)



Stay Informed, Stay Involved!

Want to see more of the animation files?
Want to stay up to date on the proposed
projects? - Follow us online!

www.AlamoRMA.org

www.411on281.com

www.MoreFor1604.com

facebook

twitter





ALAMO RMA
Alamo Regional Mobility Authority

www.AlamoRMA.org

